

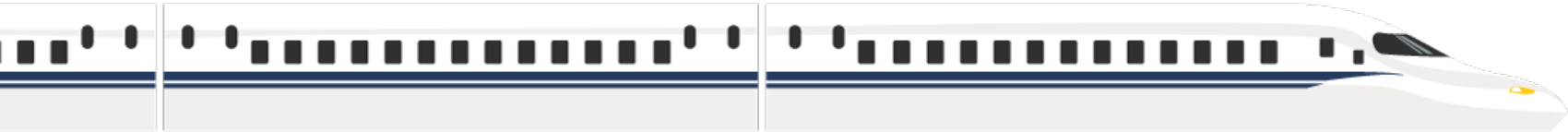
# THE TEXAS HIGH SPEED TRAIN



**CONNECTING PEOPLE, CREATING  
JOBS & A NEW AMERICAN INDUSTRY**

# Tracking Progress

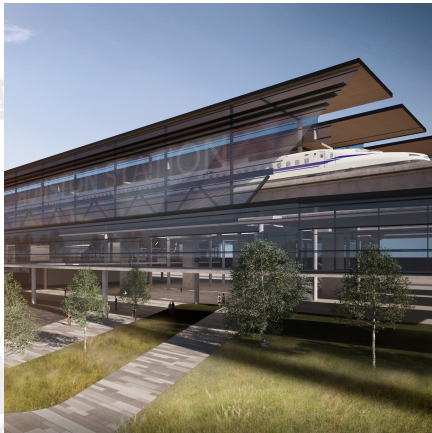
What's Next



Progress		Train Departures	
Date	Milestone	Date	Milestone
2020	Federal approvals (EIS and RPA), financial close, construction starts		
2025	Testing and commissioning period begins		
2026	Commercial service fully operational		

# Construction on a Texas-Sized Scale

## ~\$20 Billion Investment



### Stations & Facilities

- 3 passenger stations
- 2 train maintenance facilities
- Multiple rural maintenance of way and power substations



### Concrete & Steel

- 2.5 million cubic yards of concrete
- 12x more concrete than the new One World Trade Center
- 48+ million pounds structural steel
- 3.3X the Eiffel Tower

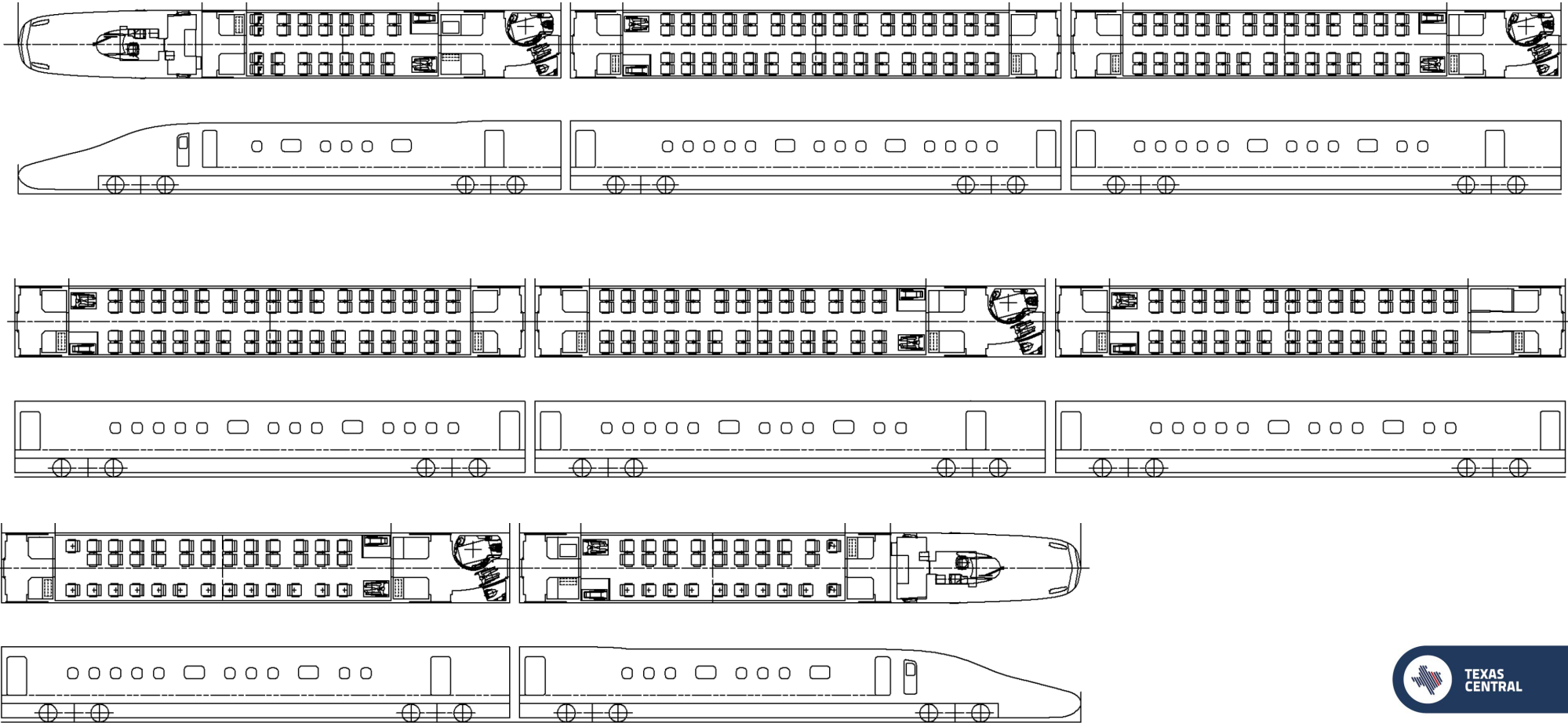


### JOBS, JOBS, JOBS

- 10,000 direct jobs per year during peak construction
- 1,500+ direct jobs once operational



# TEXAS TRAIN LAYOUT

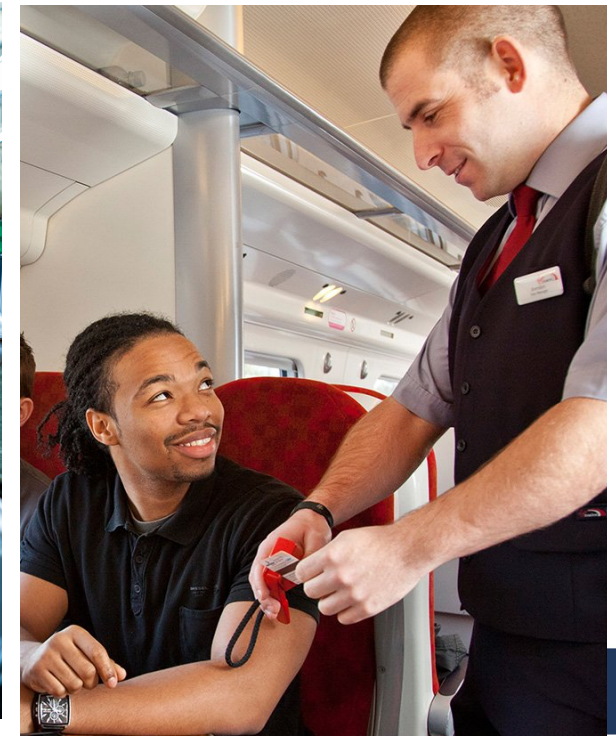


---

# Creating a New Industry in Texas

## 10,000 Jobs During Peak Construction

## More than 1,500 Direct Jobs once operational



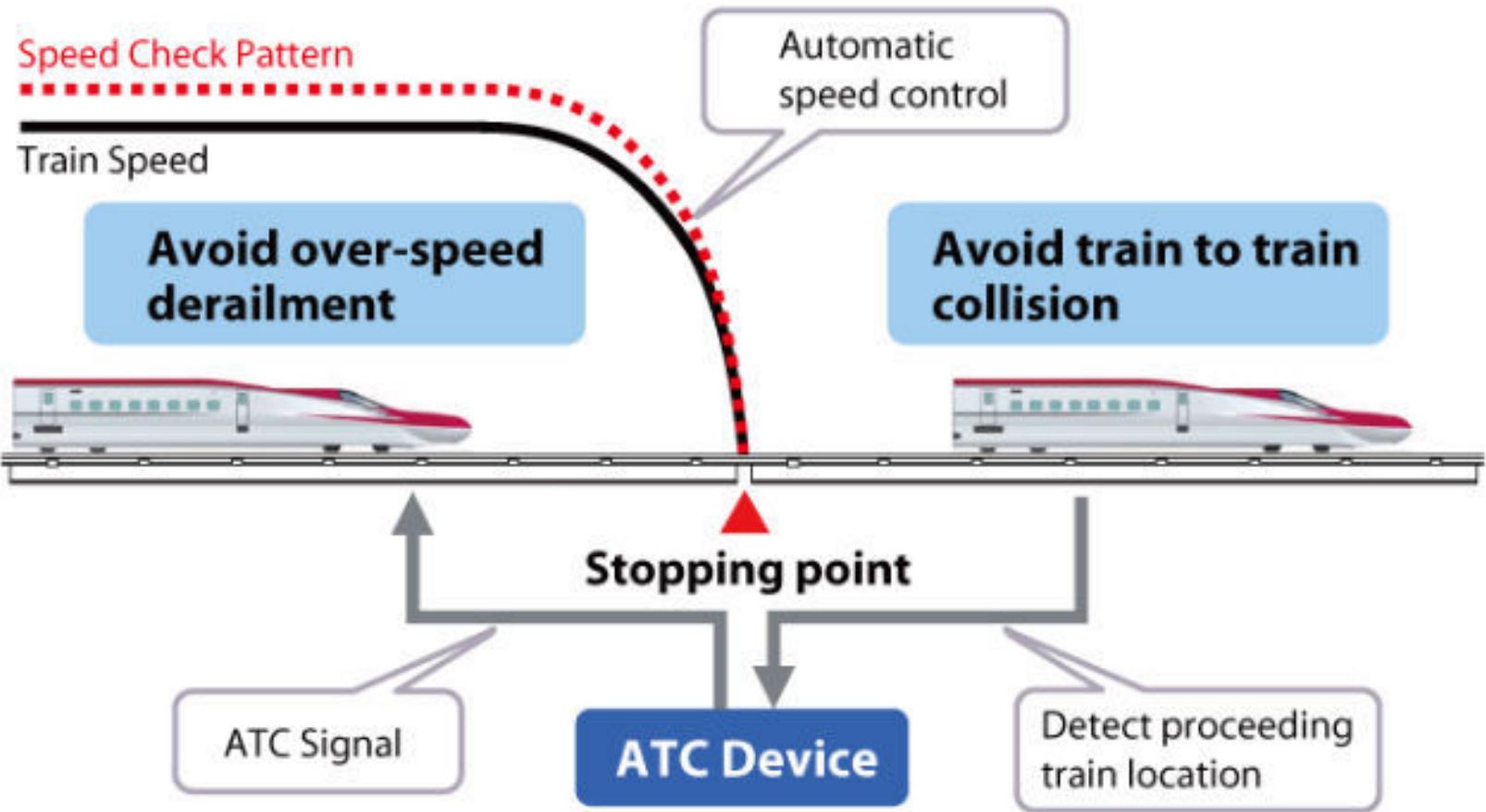
---

# BUSINESS AND WORKFORCE OPPORTUNITY POLICY TENETS

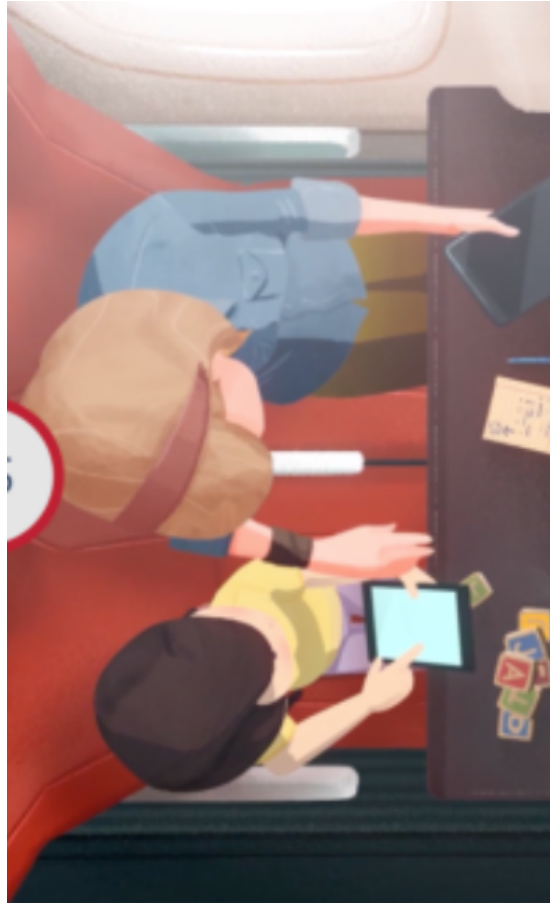
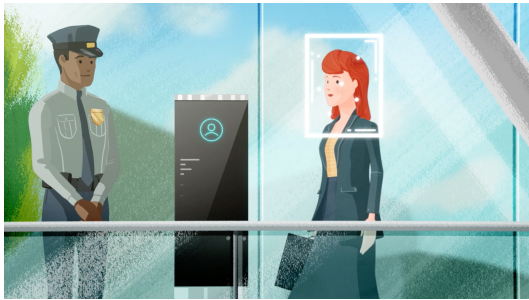










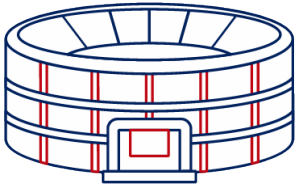


# Benefits Spread Across Texas and America

Economic Impact, Workforce Development, and Domestic Prosperity

**\$36B**

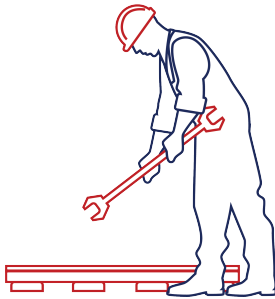
In Economic Impact



Equivalent to  
84 Super Bowls

**25%**

Of Permanent Jobs  
In Rural Communities



**14,630**

Cars removed from I-45  
annually



Will lead to net reductions in  
Nitrous Oxides, Volatile Organic  
Compounds and Greenhouse Gas  
Emissions

---

# Join the Conversation

**Text TRAIN to 52886**



**Twitter**

**@TexasCentral**



**Instagram**

**@TheTexasCentralRailroad**



**Facebook**

**[www.facebook.com/TexasCentral](http://www.facebook.com/TexasCentral)**



**Give a Testimonial**

**[www.TexasCentral.com/readytoride](http://www.TexasCentral.com/readytoride)**

