

THE TEXAS HIGH SPEED TRAIN

**CONNECTING PEOPLE, CREATING
JOBS & A NEW AMERICAN INDUSTRY**



Safest Mode of Transportation in the World



Investor-Owner Approach

Data-Driven Decisions



\$10s of millions spent on studies



16-million trips per year already being made



80% of Texans surveyed said they would consider riding the bullet train

Tracking Progress

Recent Major Announcements



DEC 2017

DEIS is Released
By FRA

MAY 2018

Agreement
Announced with
Amtrak

MAY 2018

Project Manager:
Bechtel

OCT 2018

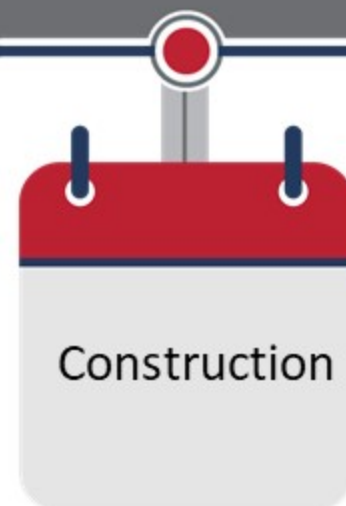
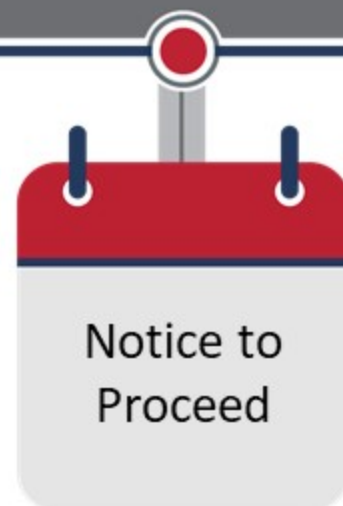
Civil Construction
Consortium:
Salini Impregilo
Lane Construction
WSP

OCT 2018

Operating Partner:
Renfe
Adif

What's Ahead

The Train is Moving Forward



World Class Companies Working on the Train



Construction on a Texas-Sized Scale

>\$12 Billion Investment in Civil Infrastructure



CONCRETE

10 million cubic yards of concrete, nearly 3X used in the Hoover Dam



RAIL

Nearly 1,100 miles of rail



STATIONS & FACILITIES

3 passenger stations
2 train maintenance facilities
multiple maintenance of way and power substations

GLOBAL BEST FOR AMERICA'S 1ST HIGH-SPEED TRAIN

Creating A New American Industry With World Class Companies



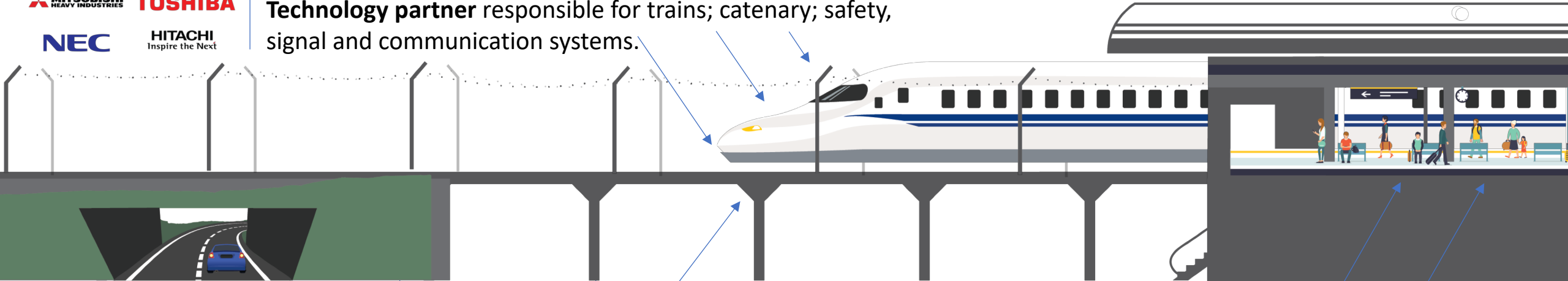
TEXAS
CENTRAL



Program manager will deliver the train on budget and schedule.



Technology partner responsible for trains; catenary; safety, signal and communication systems.



Civil contractor building everything from the ground up to the train rail including viaduct and berm foundations.



Operating Partner will run the trains, maintain systems such as power, signals and other equipment; oversee staff and service at train stations.



TEXAS
CENTRAL

Jobs, Jobs, Jobs

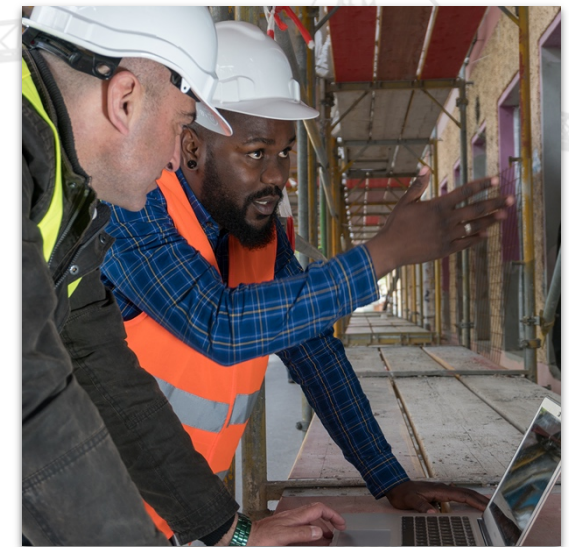
10,000 Direct Jobs per year During Construction



Electrician
\$42,000/year



Welder
\$50,000/year

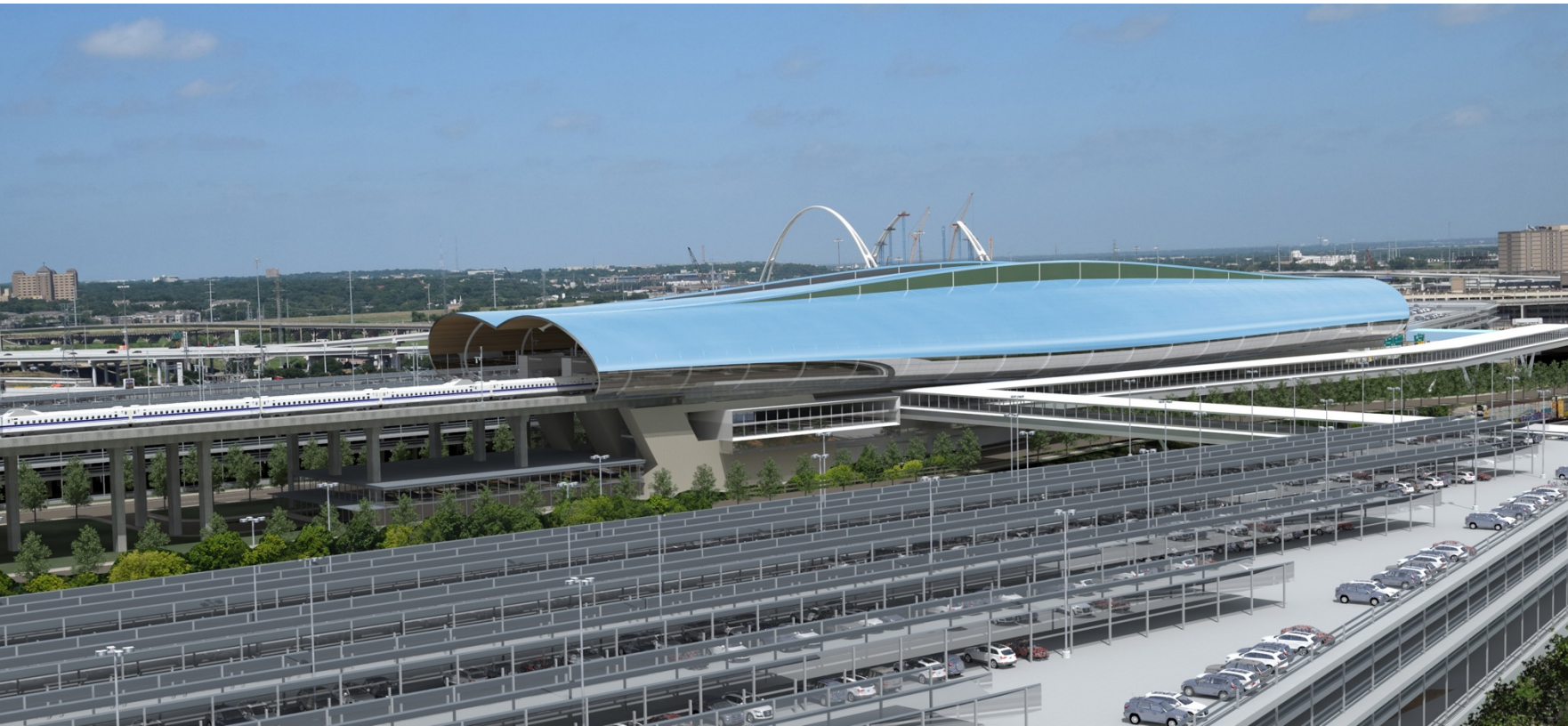


Construction Manager
\$80,000/year

Creating a New Industry in Texas

The Train is Moving Forward

More than 1,500 Direct Jobs Once Operational



Facilitating Workforce Growth and Business

Texas Central's approach to workforce and business opportunity is to maximize the participation of diverse qualified workers and companies.

TRANSPORTATION WORKFORCE OPPORTUNITY

Texas Central's Transportation Workforce Opportunity (TWO) program will help generate a demand-driven and qualified pipeline of career-seeking Texans into job opportunities associated with the high-speed train. The TWO program is based on a partnership model which will bring together:

- Community colleges
- Philanthropic Organizations
- Businesses
- Universities
- Community-Based Organizations
- Workforce Development Boards
- Independent School Districts



BUSINESS OPPORTUNITY PROGRAM

The Business Opportunity Program (BOP) supports Texas Central's plan to lead the state in connecting small businesses to viable economic opportunities in every phase of the train project. This includes:

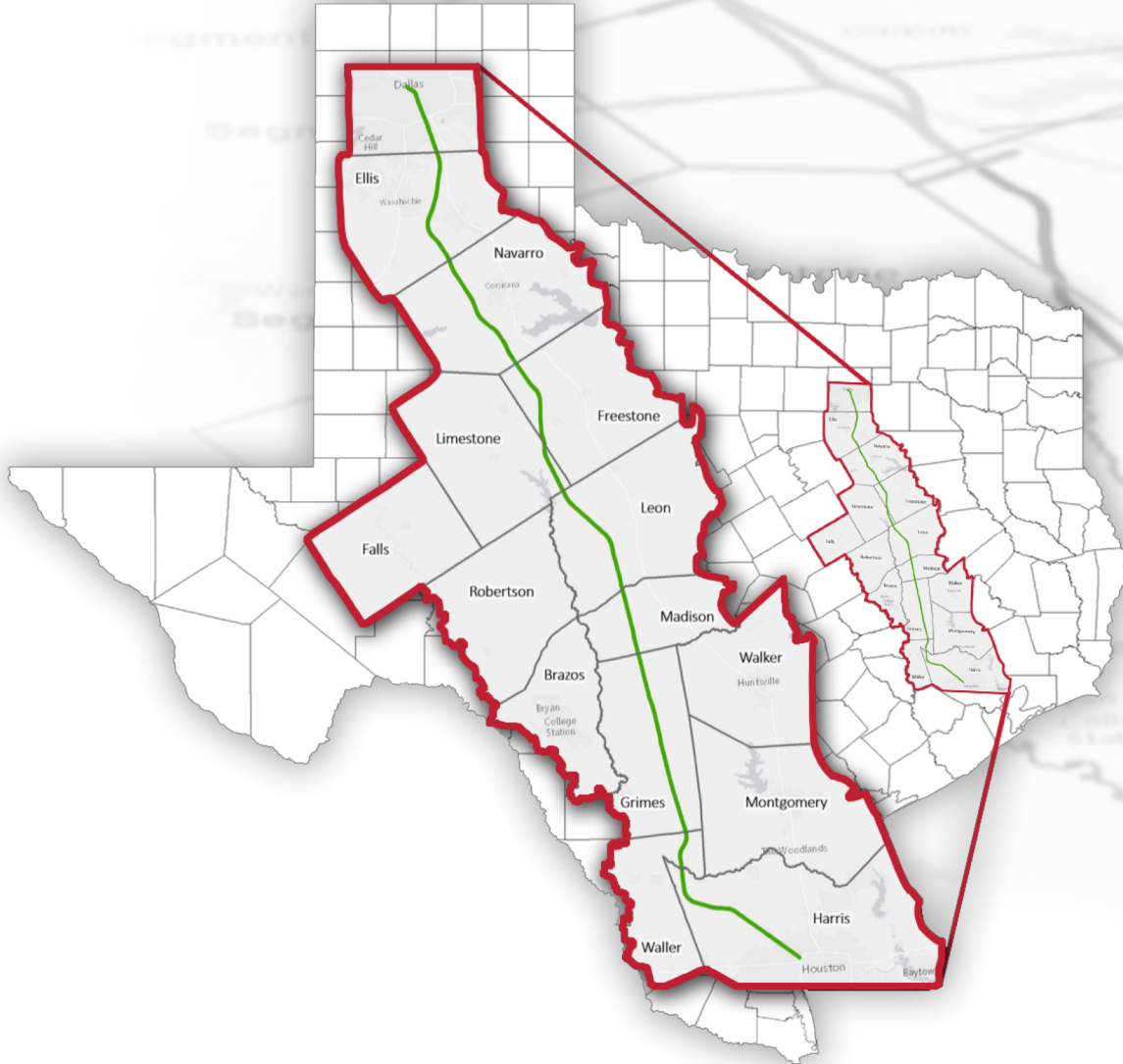
- Rural Business Enterprise (RBE)
- Women Business Enterprise (WBE, WOSB)
- Small Business Enterprise (SBA)
- Small Disadvantaged Business (SDB)
- Historically Underutilized Business (HUB)
- Veteran Owned Small Business (VOSB)
- Minority Business Enterprise (MBE)

For more information and to view our current employment opportunities please visit www.TexasCentral.com/jobs.



Building Relationships While Building the Train

The Train is Moving Forward



“I’m certainly in favor of it,
if it could save one life.”

Terry, Grimes County Resident



“It was strictly a win-win
situation for us, and I think
for Texas.”

Debra & Johnny, Madison County
landowners



“It’s a great opportunity for
Texans to travel our state.”

Alicia, Grimes County property owner

Be an Advocate for Your Train

Join Us to Stay Informed

Text TRAIN to 52886



**Share Your
Feedback**



**Give a
Testimonial**



**Sign Up to
Work on the Train**

www.TexasCentral.com

Join the Conversation



Twitter

#YALLABOARD
[@TexasCentral](#)



Instagram

#YALLABOARD
[@TheTexasBulletTrain](#)



Facebook

#YALLABOARD
www.facebook.com/TexasCentral

#YALLABOARD
www.TexasCentral.com